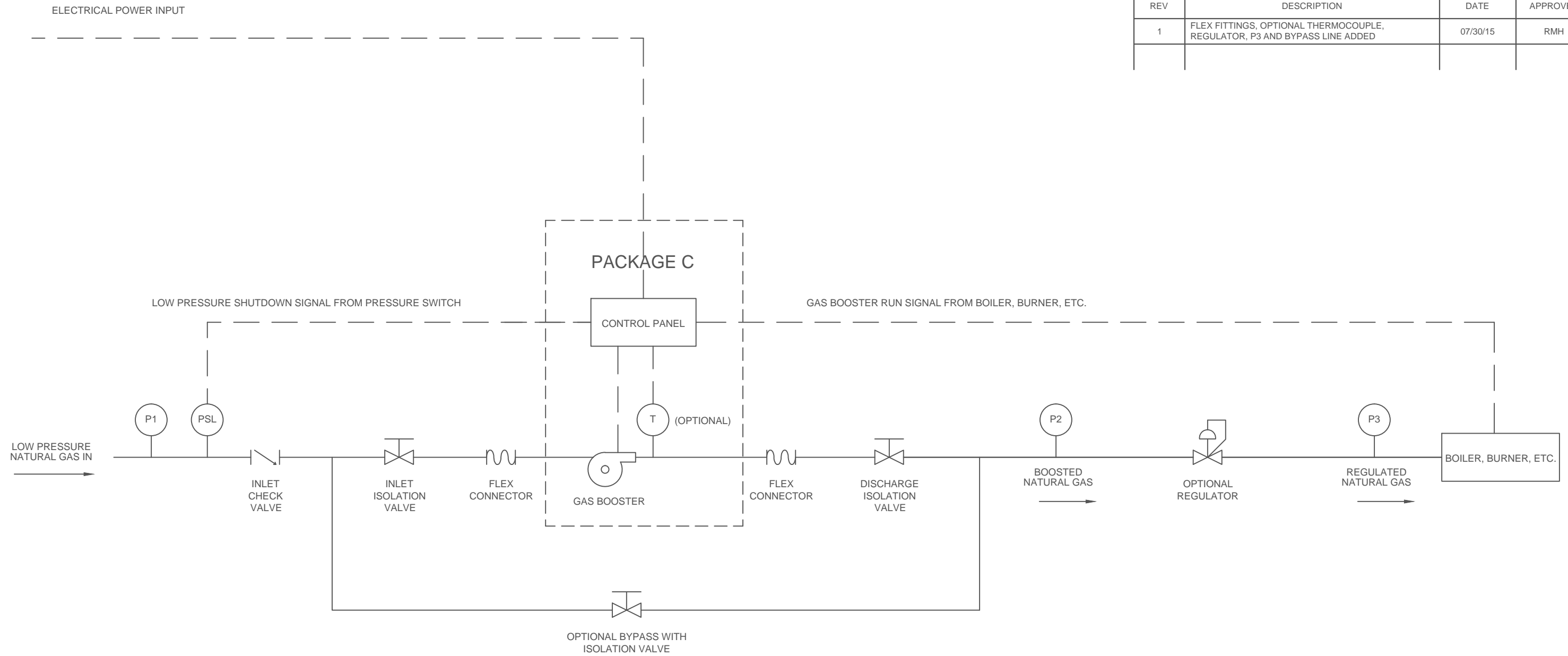


REVISIONS			
REV	DESCRIPTION	DATE	APPROVED
1	FLEX FITTINGS, OPTIONAL THERMOCOUPLE, REGULATOR, P3 AND BYPASS LINE ADDED	07/30/15	RMH



NOTES

- SOLID LINES INDICATE NATURAL GAS PIPING. DASHED LINES INDICATE ELECTRICAL WIRING.
- DIAGRAM DEMONSTRATES TYPICAL SETUP FOR GAS BOOSTER FEEDING A BOILER, BURNER, ETC.
- P1 INDICATES INCOMING PRESSURE GAUGE, P2 INDICATES BOOSTED PRESSURE GAUGE, P3 INDICATES REGULATED PRESSURE.
- PSL INDICATES LOW PRESSURE SHUTDOWN SWITCH.
- T INDICATES OPTIONAL THERMOCOUPLE TO SENSE GAS BOOSTER TEMPERATURE AND SHUTDOWN SYSTEM UPON HIGH TEMPERATURE CONDITION.
- PACKAGE C INCLUDES CONTROL PANEL WIRED TO GAS BOOSTER AS INDICATED.
- RUN SIGNAL FROM BOILER, BURNER ETC. ALLOWS GAS BOOSTER TO RUN ONLY WHEN BOOSTED GAS IS REQUIRED.
- ISOLATION VALVES MAY BE PLUG VALVES OR BUTTERFLY VALVES DEPENDING ON INSTALLATION.
- SOME SYSTEMS MAY HAVE MULTIPLE REGULATORS DOWNSTREAM OF THE GAS BOOST SYSTEM DEPENDING ON QUANTITY AND VARIOUS PRESSURE REQUIREMENTS OF EQUIPMENT BEING SUPPLIED.

THIS DRAWING AND THE INFORMATION AND DESIGNS SHOWN THEREON ARE THE PROPERTY OF ACTION BLOWER & EQUIPMENT, INC. IT IS CONFIDENTIAL AND MUST NOT BE COPIED, DIVULGED, OR SUBMITTED TO OTHERS AND IS SUBJECT TO RETURN ON DEMAND.

TOLERANCES		action blower & equipment, inc.		
		TITLE P&ID, Package C Gas Boost System		
DRAWN BY	RMH	SIZE	DWG NO	REV
CHECKED BY	RMH	<b>B</b>	Gas Booster Package C P&ID.dwg	<b>1</b>
APPROVED BY	RMH	DATE 06/24/2015		SHEET 1 of 1
		SCALE N/A		